



## Welcome to the West Area Planning Committee

- This planning committee meeting is held in public, but it is not a public meeting.
- There will be opportunity for the public to address the committee on each application.
- If you wish to speak for or against a planning application, you will need to have either requested it in advance, or fill out and hand in one of the available speaker forms.
- Information on meeting protocol and conduct at committee is set out in the Code of Practice.
- You can find a copy of the Code of Practice in the committee agenda, just before the first planning application report.



Site plan – Rochester House and former Post Office buildings



**The front elevation of Rochester House, Pembroke Street**



**Extent of damage to the Triton statue**



**Gable feature on Rochester House and internal courtyard**



**View through to the Pembroke Street entrance**



Internal courtyard







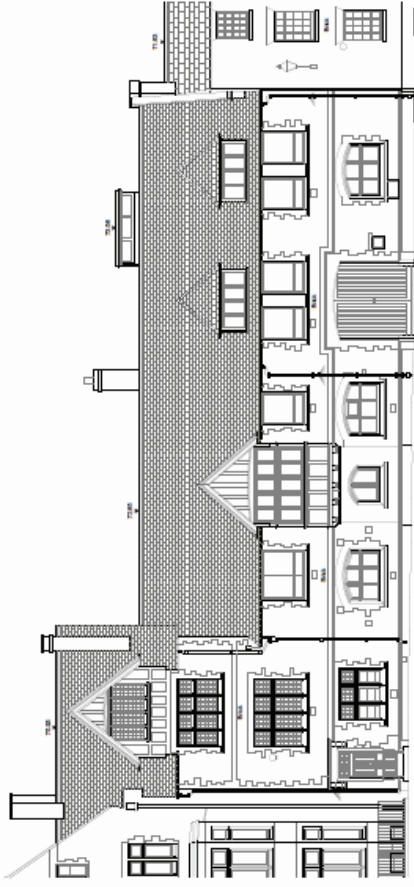






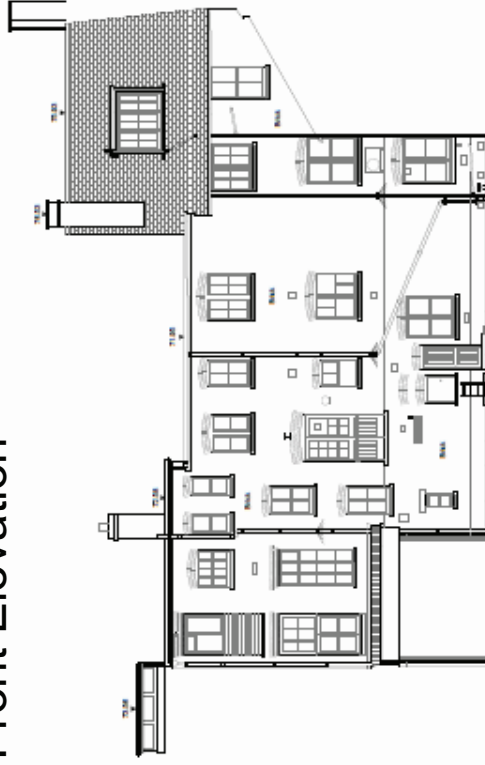
# Existing Elevations: Rochester House

Elevation 1



Datum 60.00m  
Rochester House, Pembroke Street

## Front Elevation



Datum 60.00m  
Internal Courtyard (Looking South)

## Internal courtyard - south

Elevation 2

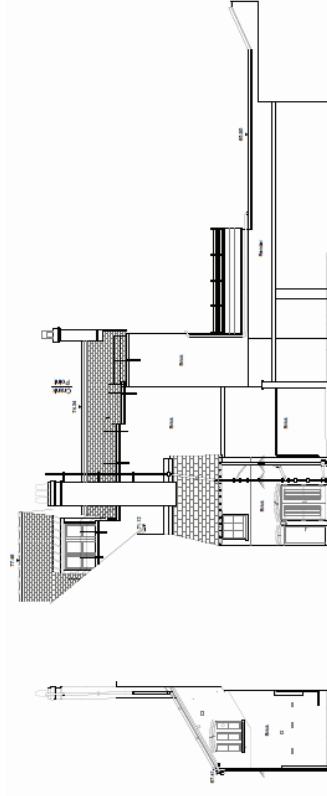


Datum 60.00m

Elevation 3



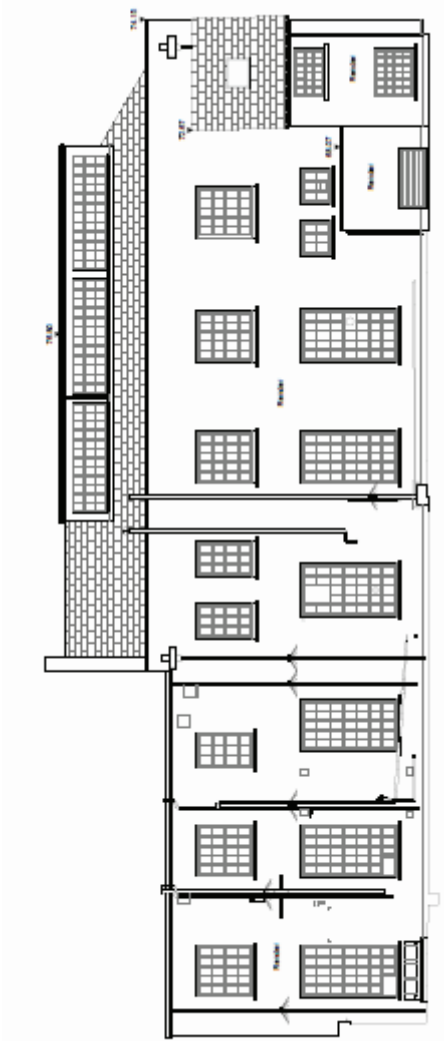
Datum 60.00m



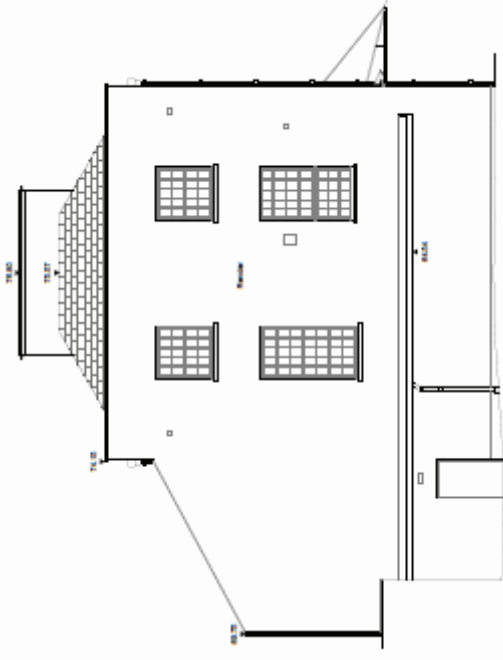
Datum 60.00m  
Internal Courtyard (Looking West)

## Internal courtyard - west

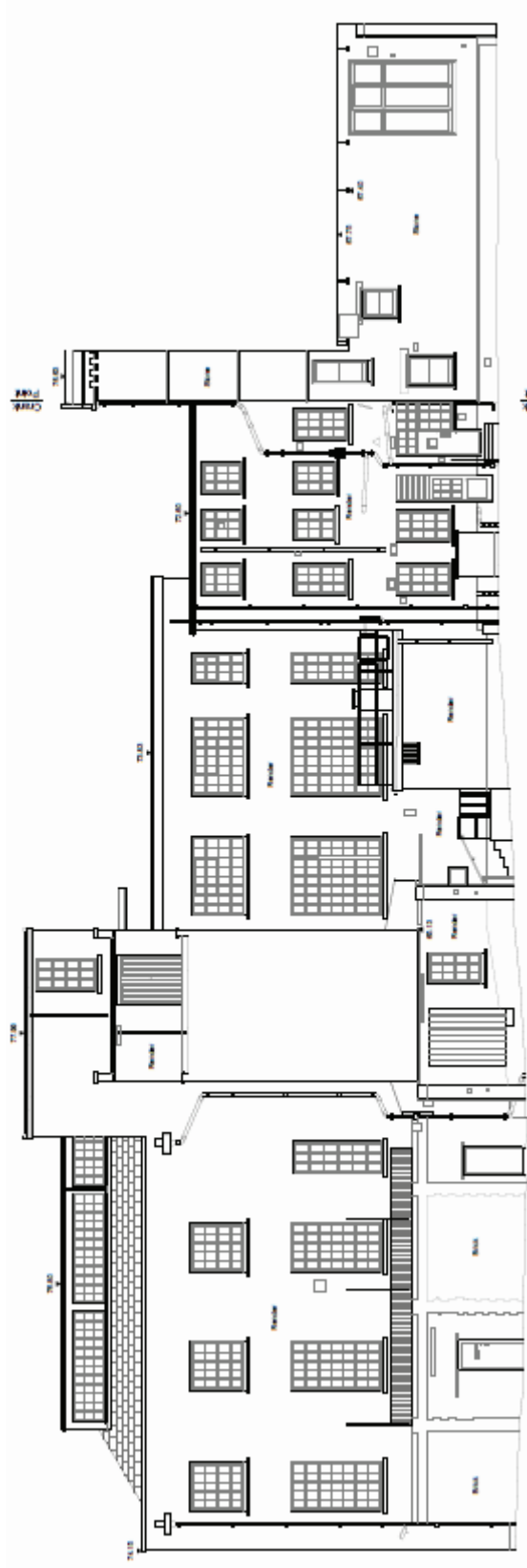
# Existing Elevations: North Block



North elevation

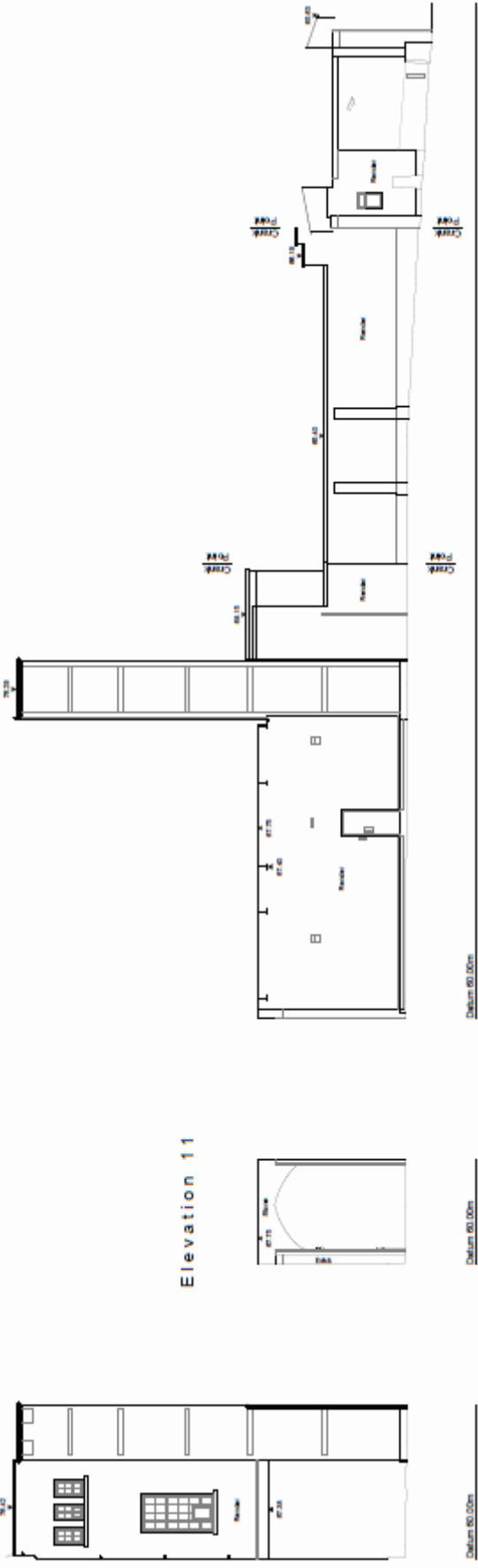


West elevation

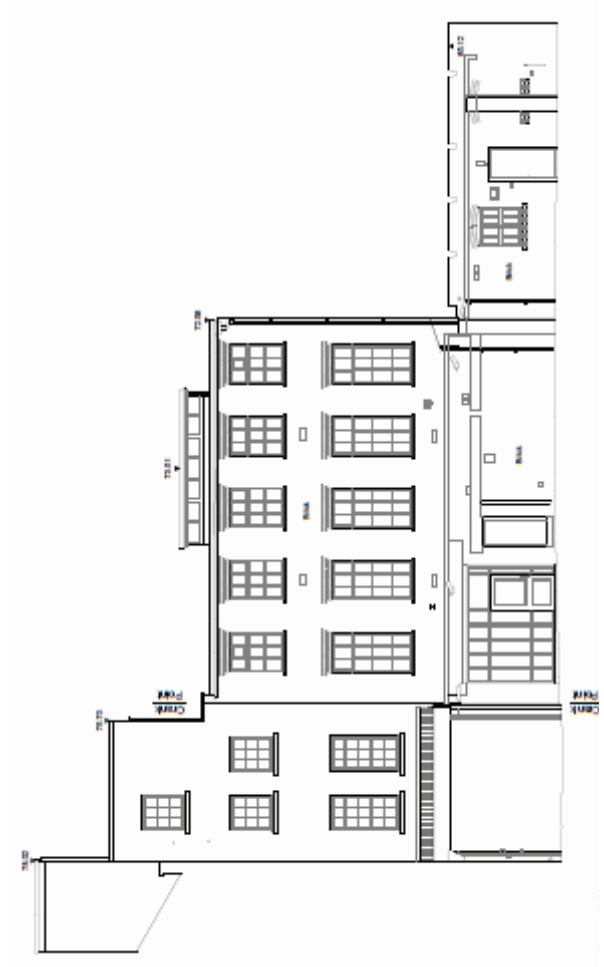


Internal courtyard - looking north

# Existing Elevations: East Block

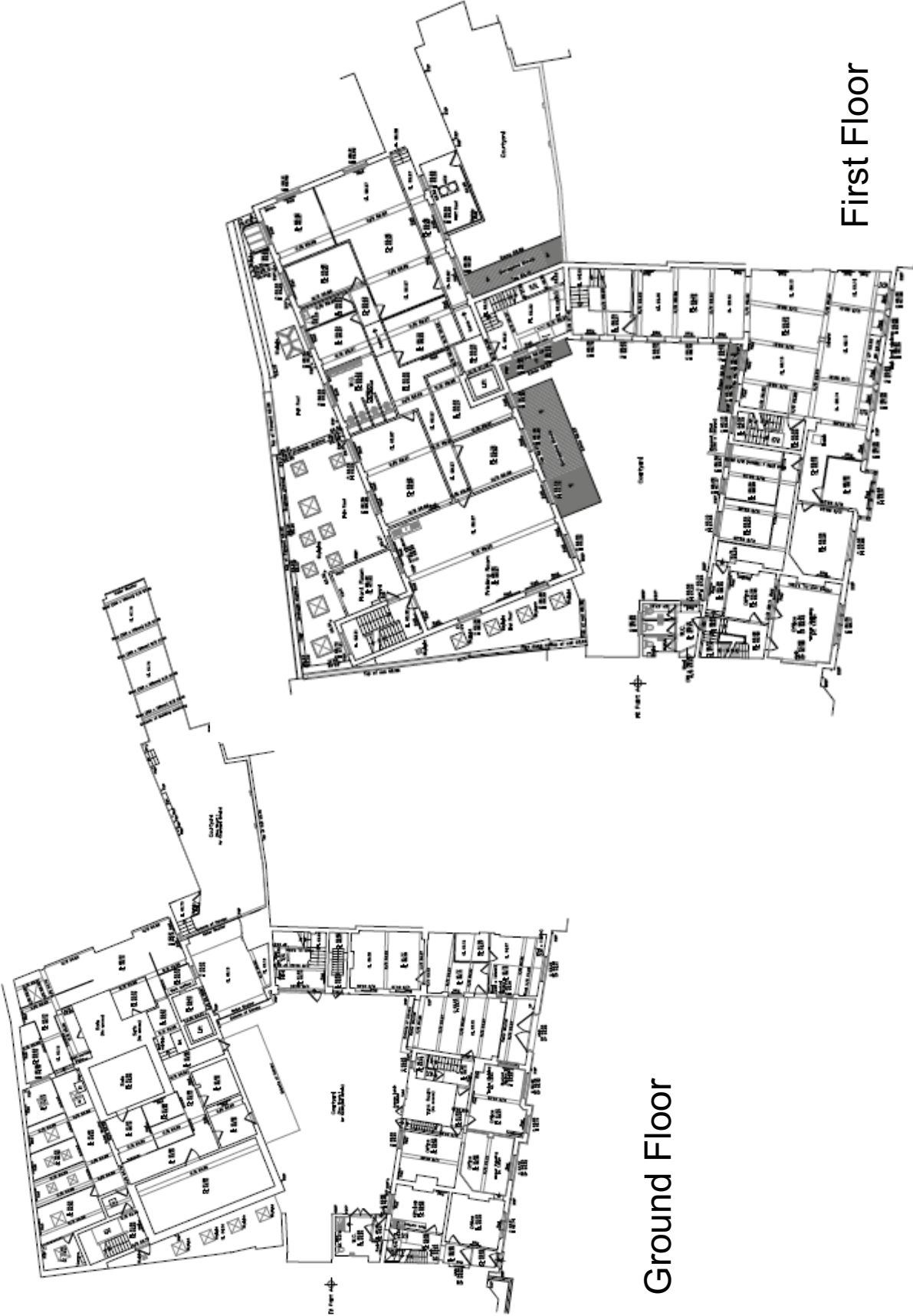


# St Aldates Passage



# Internal Courtyard – looking east

# Existing Floor Plans



Ground Floor

First Floor

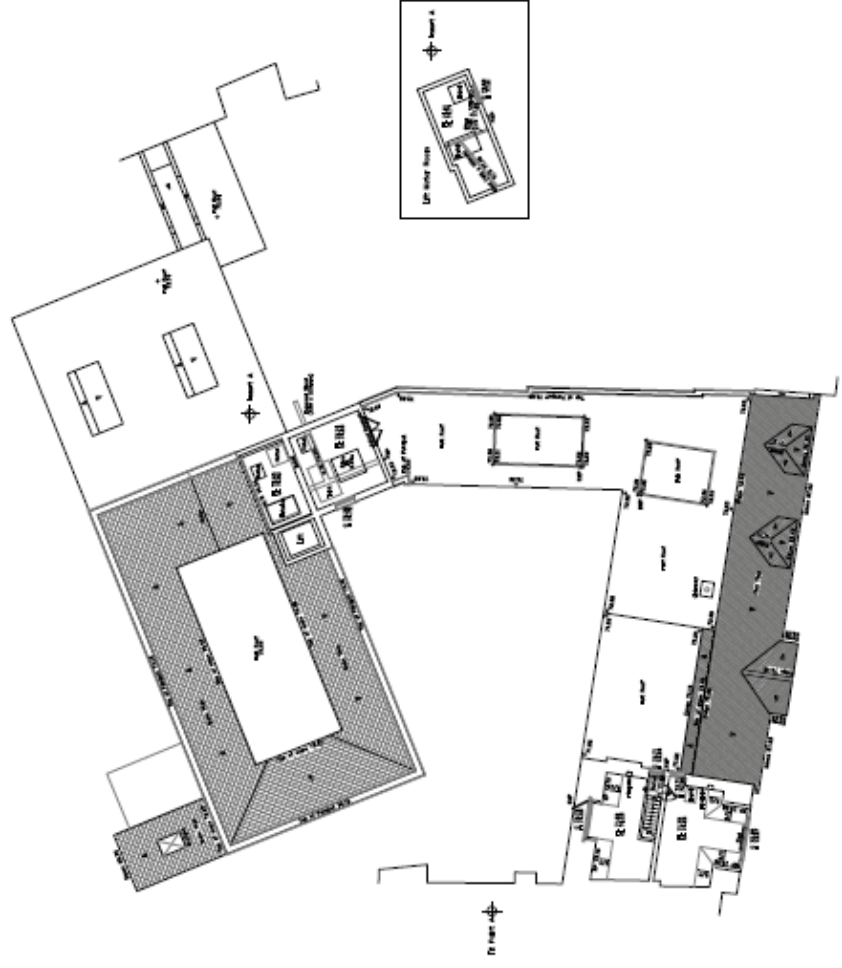


# Existing Floor Plans

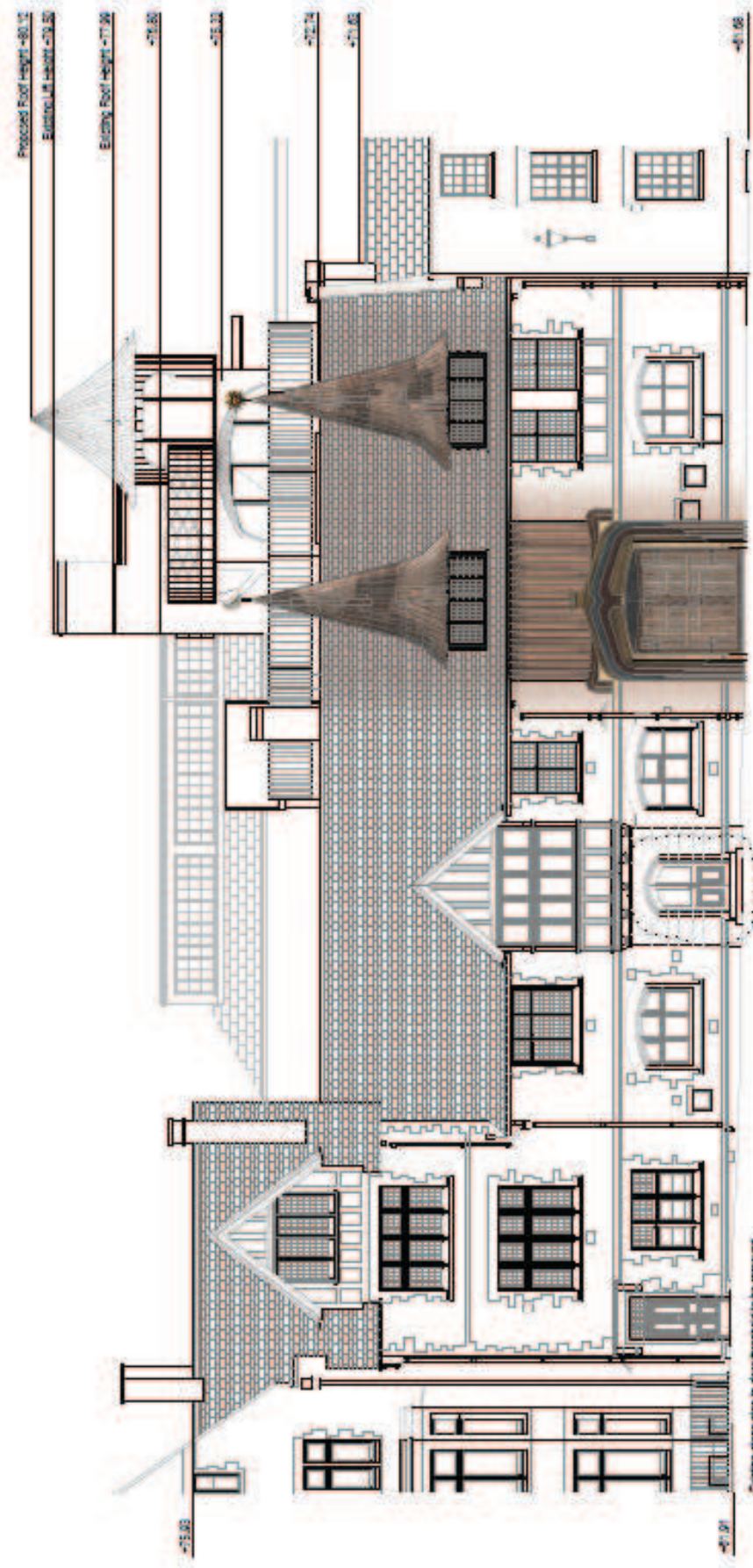


Third Floor

Roof plan



# Proposed front elevation – Rochester House



# Section – looking west

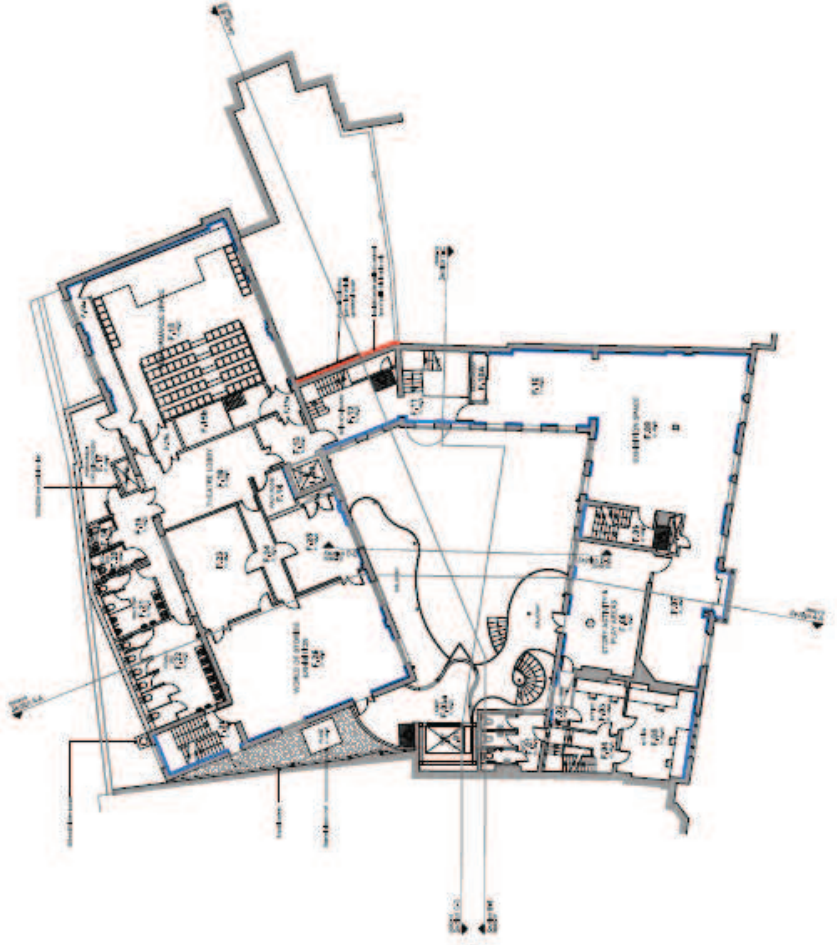


# Proposed Floor Plans

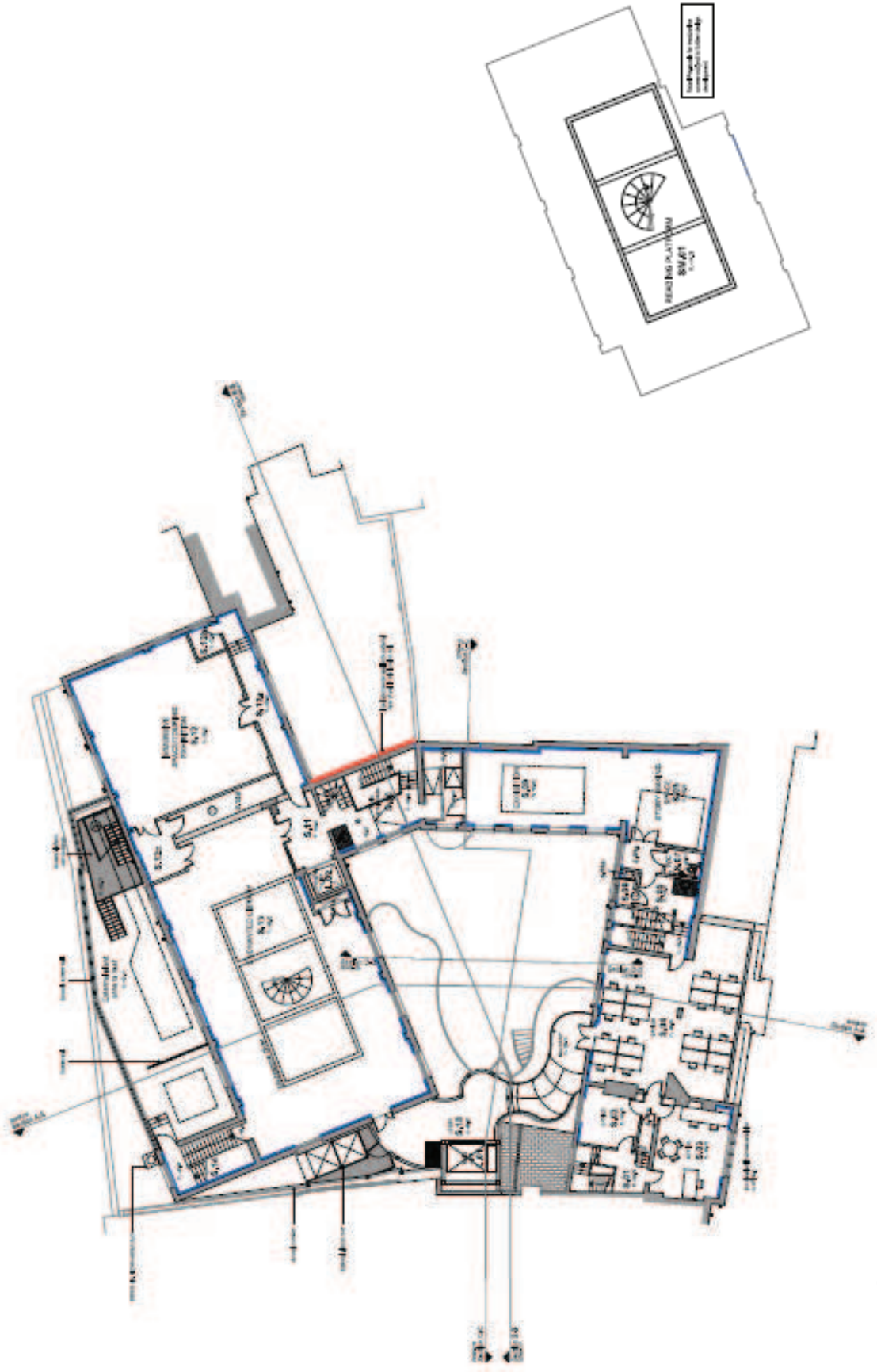


Ground Floor

First Floor

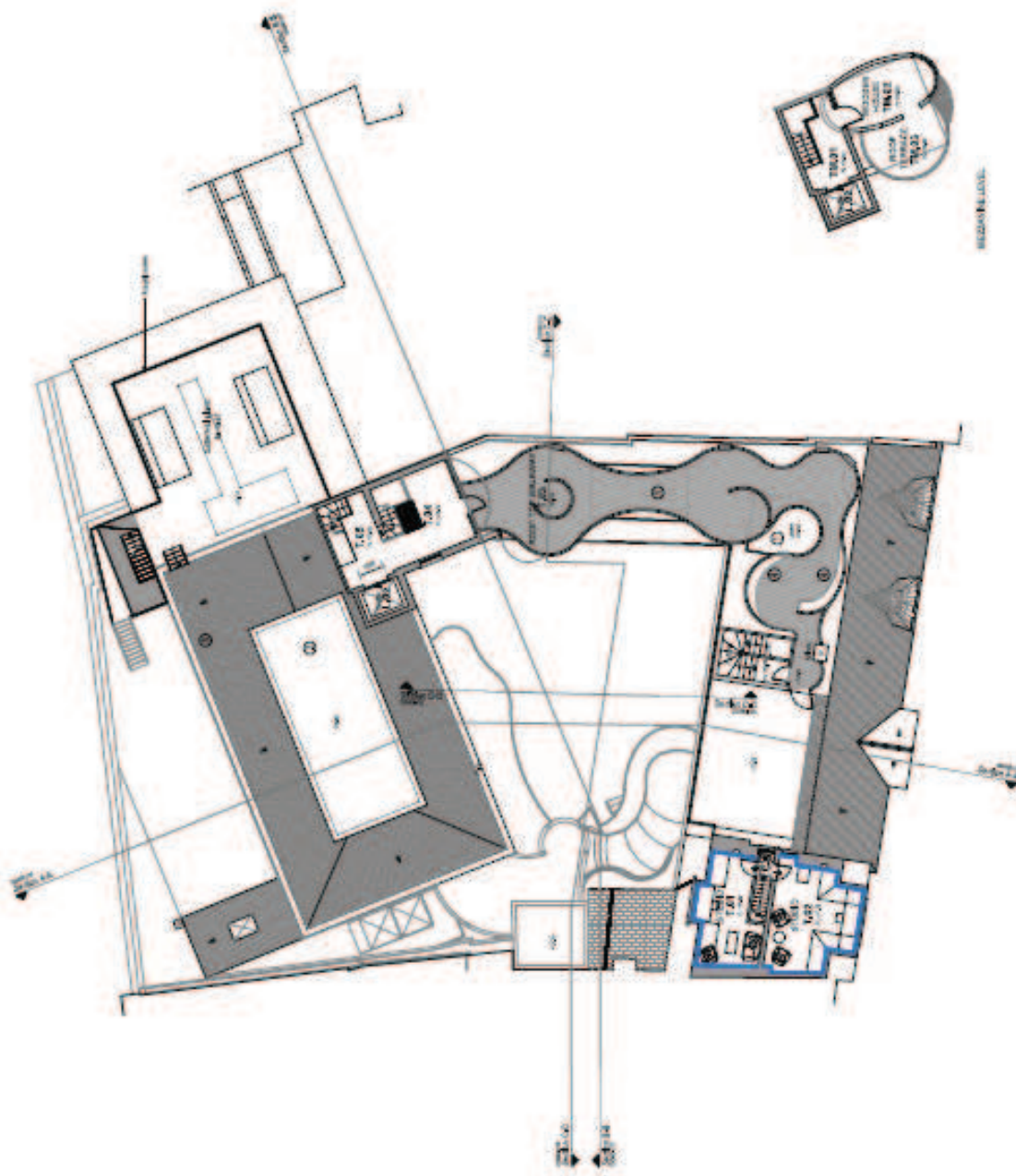


# Proposed Floor Plans



Second Floor

# Proposed Floor Plans

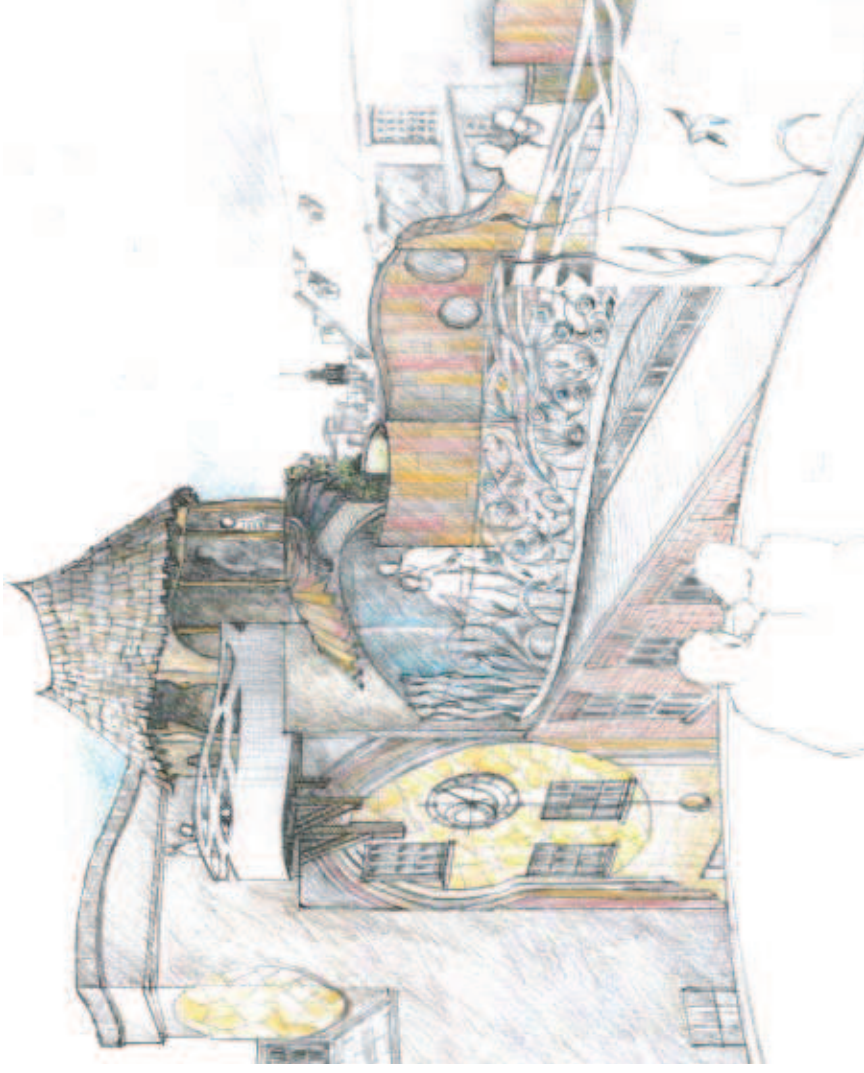


Third Floor

# Illustrations

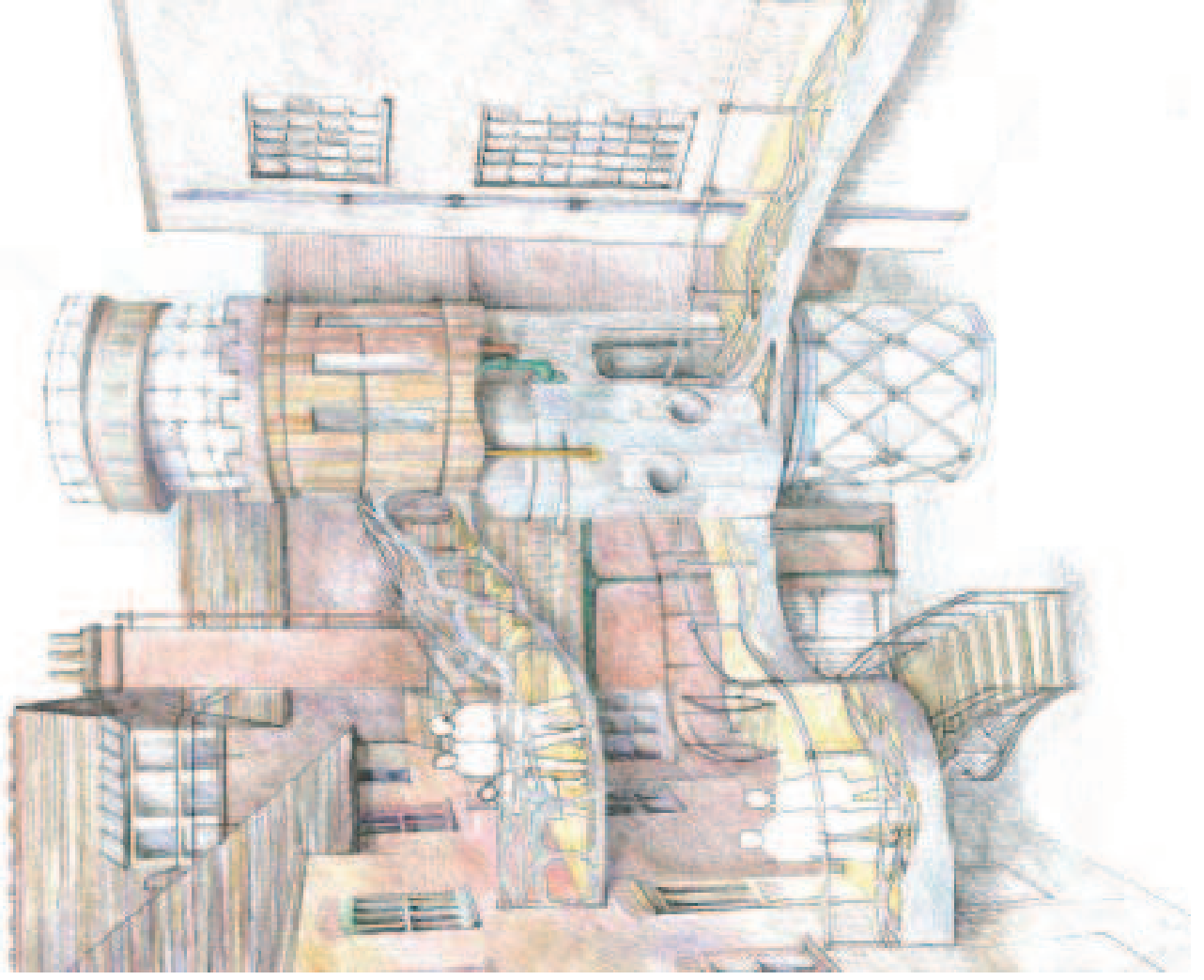


Pembroke Street elevation



Rooftop walkway

## Illustrations



Story Tower